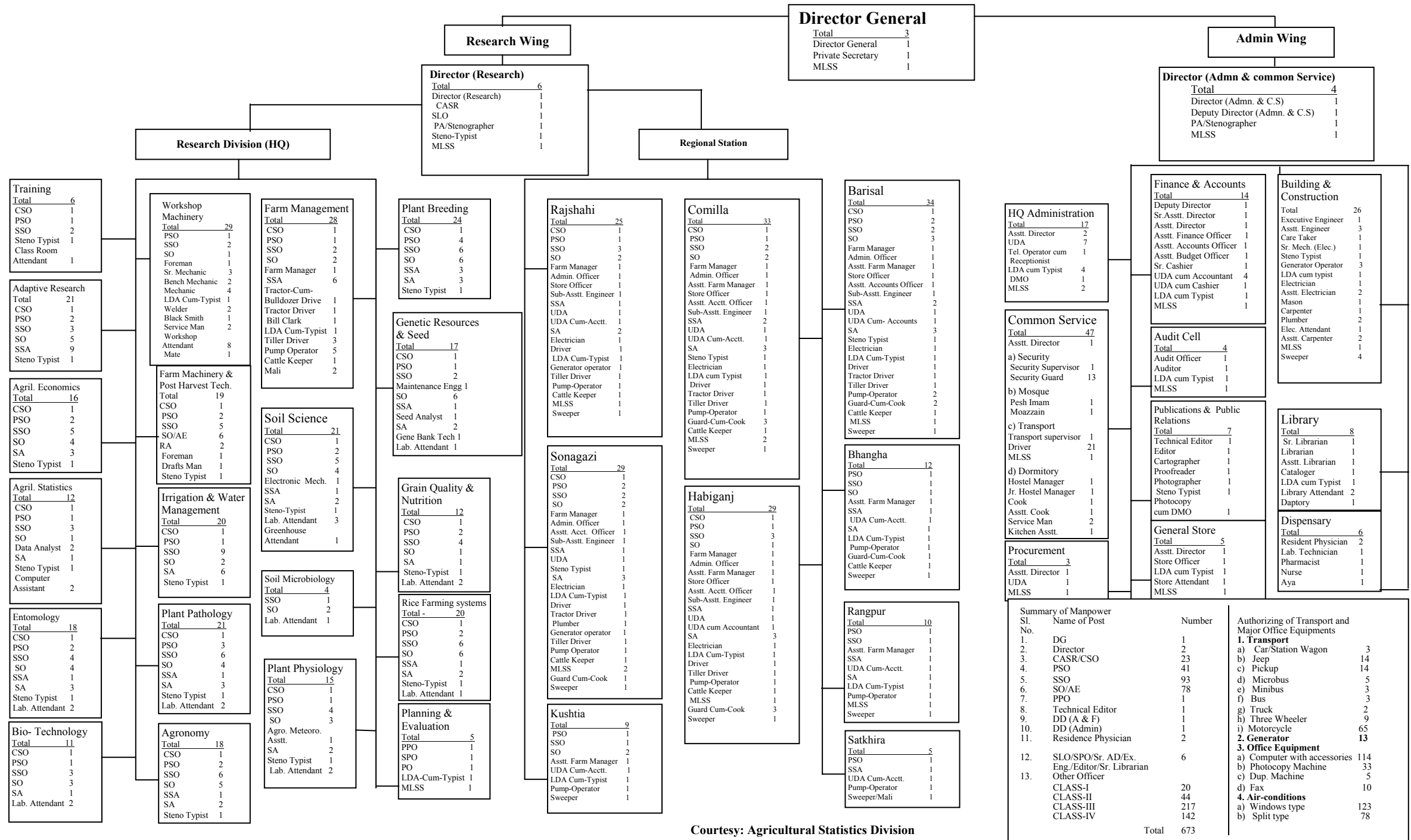


Organogram of the Bangladesh Rice Research Institute (BRRI), Gazipur



Summary of Manpower		
Sl. No.	Name of Post	Number
1.	DG	1
2.	Director	2
3.	CASR/CSO	23
4.	PSO	41
5.	SSO	93
6.	SO/AE	78
7.	PPO	1
8.	Technical Editor	1
9.	DD (A & F)	1
10.	DD (Admin)	1
11.	Residence Physician	2
12.	SLO/SPO/Sr. AD/Ex. Eng./Editor/Sr. Librarian	6
13.	Other Officer	20
	CLASS-I	44
	CLASS-II	217
	CLASS-III	142
	CLASS-IV	78
	Total	673

Authorizing of Transport and Major Office Equipments		
Sl. No.	Name of Post	Number
1.	Transport	13
a)	Car/Station Wagon	3
b)	Jeep	14
c)	Pickup	14
d)	Microbus	5
e)	Minibus	3
f)	Bus	3
g)	Truck	2
h)	Three Wheeler	9
i)	Motorcycle	65
2.	Generator	13
3.	Office Equipment	114
a)	Computer with accessories	33
b)	Photocopy Machine	5
c)	Dup. Machine	10
d)	Fax	10
4.	Air-conditions	123
a)	Windows type	78
b)	Split type	45